

Ready for Big Water Vote

181 at New School

Enrollment for Monday, first day of school for the three Alpine plants, was 531 with 181 at the new Harbison Canyon school.

"This was a great day" said Supt. Clyde T. Gilley, "for the first time in years there were

MORE ON PAGE 28

NO ORGANIZED OPPOSITION FOR ANNEXATION TO RIO

On Tuesday, Sept. 27, the work of many years by civic-minded residents of Alpine and adjacent areas, will culminate in the election for annexing Alpine Heights MWD and its annexed areas that were once the proposed east County MWD.

By this ballot will be decided



FIRST BUSLOAD OF STUDENTS TO ARRIVE MONDAY MORNING AT NEW HARBISON CANYON SCHOOL, ENDED DISTASTEFUL DOUBLE SESSIONS. NORMAN FOSTER WAS DRIVER OF THIS BUS THAT INAUGURATED ACTIVITIES AT BEAUTIFUL NEW PLANT.

Alpine's future progress, growth, water supply and numerous other things that are sure to follow the coming of ample water to this area.

At the same time several other areas nearby are to vote on this annexation which will give all the much needed allotment of water from SD County Water Authority and the Metropolitan MWD of LA, which controls all

MORE ON PAGE 30

Just back from La Paz, Mexico is Blanche McCall and her mother who spent last week there enjoying the tropical atmosphere.

Any housewife will tell you that the most difficult meal for her to get is breakfast in bed.

JEANETTE C. HINKLE
Real Estate & Insurance
CASUALTY & FIRE

2101 HIGHWAY 80 ALPINE HI5-2502

AERO DRIVE-IN

BOSTONIA HI4-8800

NOW THRU TUESDAY
ROY HERSCH
LLOYD NOLAN
'CRAZY LEGS'
MARTHA HYER
RICHARD BURTON
'ICE PALACE'

SWAP MEET EVERY SAT. & SUN
9 to 5, 35¢ a car.

EL CAJON THEATRE

Hickory 4-3272

THURS. FRI. SATURDAY

LANA TURNER-ANTHONY QUINN
SANDRA DEE-JOHN SAXON

Portrait in Black
in COLOR

LLOYD NOLAN-^{RS} MATTHEW CABOT-^{RS} RAY WALSTON
VIRGINIA GREY AND ALSO
ANNA MAY WONG CO-STARRING RICHARD BASEHART

al so



WE GIVE
S.N.
GREEN
STAMPS

REVERE WARE- Sauce Pan 1½ Qt.

Reg. Price \$6.75. Special \$4.99

Alpine Hardware & Dept. Store

HI5-2406

P.O. Box 118

2218 Hwy 80

September Church Xmas

On the way to San Francisco for the Scandinavian Seaman's Mission, are 30 nice gifts which were wrapped at a "Christ-



HOTTEST DAYS OF SUMMER SAW CHRISTMAS TREE AND GIFTS AT CHURCH. LEFT, MRS. HARRY SPILLER, PRESIDENT, MISSIONARY SOCIETY AND MRS. R. C. BOSTROM, SOCIAL CHAIRMAN.

mas in September" party in the First Baptist Church of the Willows, reports officers of this new group, 2530 Hwy 80.

"Last year over 9000 young men were at the mission" says Mrs. Jeanette Hinkle, one of the workers, "and this year the average is 6 to 1100 every month. The work is carried on by the Rev. R. Olsen and Ingemar Nilsson who meet ships and take the boys on sight-seeing trips, shopping and so on, ending up at the mission for fellowship, and it is doing a lot of good".

Most of the lads are under 20, and many never return to Europe, some settle on this coast, so the Christmas event is a big one for them.

The money the other fellow has is capital; getting it away from him is labor.

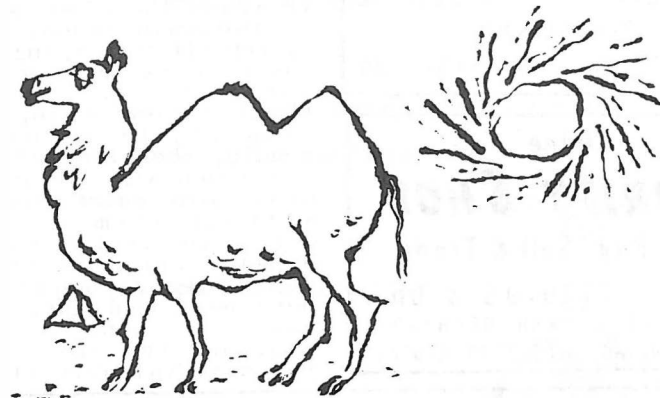
AT DESCANSO'S CHURCH BARBECUE DR. H. C. MERIGAN, EC DENTIST, AND WIFE, WHO HAVE LARGE RANCH NEARBY, ENJOYED FEAST

CHET BROWN

Licensed Electrical Journeyman
**ELECTRICAL
WIRING & REPAIRS
HI5-2491**

SOME LIKE IT HOT...
BUT IF YOU LIKE IT COOL

AIR CONDITION!



Life is a breeze in an air conditioned home. Air conditioning cools the air, purifies it, controls humidity. The whole family stays happier, healthier... the house stays cleaner, fresher. Air condition now—one room or every room. And investigate the advantages of central, year-round air conditioning which cools in summer, heats in winter.

Remember—when it comes to comfort, air conditioning makes the difference!



AIR CONDITIONING DIVISION
BUREAU OF HOME APPLIANCES
OF SAN DIEGO COUNTY



THE ALPINE SUN

America's finest newspaper!

HICKORY 5-2415 OR 2394

PUBLISHED SEMI-MONTHLY ON FRIDAY
10¢ A COPY BY MAIL, \$2. YEARLY

2255 TAVERN RD. MAIL RT. 1, BOX 189

ALPINE, SAN DIEGO COUNTY, CALIFORNIA
OWNED BY HEALTH DEFENSE LEAGUE, INC.
CLARKE IRVINE, EDITOR & PUBLISHER
ALICE IRVINE, ART & COMPOSITION

PRINTED BY PHOTO-SET ON OUR RANCH
EAT JAN 1952. ADJUDGED 11.12.59 IN
SUPERIOR COURT NO. 238120 FOR LEGAL

SECOND CLASS MAIL PRIVILEGES
AUTHORIZED AT ALPINE, CALIF.

MEMBER CO. NEWS SERVICE
ADS, NEWS & SUBS TAKEN AT
ISOBEL'S GIFT SHOP,
2249 HWY 80.

W. L. WEEKS CONST. CO.

General Contractor

COMMERCIAL RESIDENTIAL
REMODELING

ALPINE HI5-2226

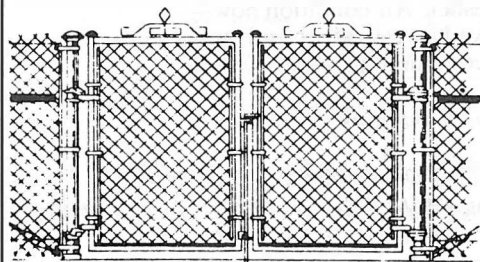
Alpine

THRIFT SHOP

We Buy, Sell & Trade

TV . \$29.95 & Up
BERNIE & FRAN BECHARD
1945 Hwy 80, HI5-2270 Alpine

COMPLETE FENCING



American Fence Co.

327 Cypress Lane

HI2-3396

CHAIN LINK - REDWOOD

BLOCK WALLS

FREE ESTIMATES

Don't Let Illusions Insult Intelligence

Today millions are going back to school. Young and not so young are taking up learning. Even a lot of oldsters, and not so old, are, if alert, still learning.

To the intelligent person, the thinker, school, whether it be academic or the wide world, offers thousands of solutions to our everyday problems. How may we know the real thing from the host of illusions that confront us every day?

Take our Olympic athletes, and others that rely on physical fitness, alert minds, thinking processes. Illusion is darted at us every minute from Radio, TV, newspapers, magazines, billboards and even our friends.

The illusion-thought would have us believe that smoking and drinking mean success, social prominence and good times, when nearly the opposite is true. The alert student or businessman cannot be fooled by repetitious urgings of these ads to drink this, smoke that, eat such. The wise person thinks these things out for himself, by studying, and reading the lives of great men and women who, by abstinence, have won fame and fortune without them.

Yes, for real happiness, and health, which is a priceless possession, you will have a permanent, abundant, satisfying asset that none can take from you, and the older you grow, the more valuable it will be.

DO YOU NEED WATER?

Be it a new well installation, or simply testing, replacements or repairs, whatever your problem, we can be of service. Regardless of terrain, soil condition or location, we can help bring water to the area where you need it the most. With the most up to date, completely adequate equipment, and the "know how" our service will cost you far less in the long run.

Let us know your needs, and we will give you a free, fair estimate, tailor made to your specific requirements.

No job too big or too small

Write or Call for
FREE ESTIMATE

1025 East Main St.

EL CAJON

Hickory 4-2149

(We're as near as your Telephone)





ENROLLMENT AT NEW HARBISON CANYON SCHOOL MADE BUSY SCENE MONDAY MORNING WHEN WALLACE N. KENT, PRINCIPAL, WELCOMED PARENTS AND YOUNGSTERS. HE HAS STAFF OF EIGHT TEACHERS. NEW BUILDINGS ARE LATEST IN MODERN IDEAS, EQUIPMENT, LIGHTING, ETC.

Mrs. Ed Nixon is visiting her daughter in Oakland where she plans to spend several weeks.

J. H. McKie, Jr.
REALTOR

2355 HIGHWAY 80
P. O. Box 398 ALPINE, CALIF.
ELSIE HOFFMAN, ASSOCIATE
HICKORY 5-2217

TV REPAIR
SERVICE

Over 35 Years in Radio & TV
GUARANTEED REPAIRS ON ALL MAKES
GEORGE LENGBRIDGE
HI5-3885

Evelyn's
BEAUTY SHOP

PERMANENTS FROM \$5.50 UP
ALWAYS OPEN THE TUESDAY
BEFORE ALL HOLIDAYS
CLOSED TUESDAY HI4-4294
2030 CREST DR., SUNCREST

MODEL CONTEST AT

Isobel's Gift Shop

1. Each model you enter will cost you a dime, you are allowed to enter only two models.
2. All models must be either a car or boat.

MODELS WILL BE JUDGED ON OCT. 1, 1960

NOW TAKING YOUR NEW & RENEWAL SUBSCRIPTIONS
ALSO CLASSIFIED ADS FOR THE ALPINE SUN

2249 Hiway 80, Alpine BUY IT IN ALPINE! HI5-3106



CASINO INN, 1155 HWY 80, HAS RECEIVED ITS DANCING PERMIT. NOW ENTERTAINS WEEK-ENDS WITH LOCAL TALENT. HERE ARE THREE RHYTHM RIDERS TAKEN FRIDAY NIGHT IN NEWLY DECORATED INN. FROM LEFT, JIM LUEY OF SPRING VALLEY, A CHAMPION GUITARIST FROM HAWAII; ROBERT BROWNE, ALPINE NEWCOMER OF 2405 TAVERN ROAD, AND LOUIS WOOD, OF SD. THEY PLAY SWEET WESTERN AND HAWAIIAN TUNES, HAVE ONE OTHER MEMBER, SONNY ARNWINE OF CASA DE ORA.

SUBSCRIBE TO THE SUN, \$2 A YEAR

Now...
savings
earn more



Member Federal Deposit Insurance Corporation
1402 EAST MAIN ST., EL CAJON

READY FOR SATURDAY WHIRL

They plan a big time in Campo tomorrow night at the Harvest Dance of the mt. whirlers square Dance Club at the clubhouse, invites Mrs. Alden Farris, publicity chairman.

KARI JEWELERS

WE TEACH THE WATCH TO TICK
A FINLAND TRAINED EXPERT
30 YEARS EXPERIENCE
ALL KINDS WATCHES AND CLOCKS
REPAIRED
ALL WORK GUARANTEED

HI4-7304 116 PRESCOTT
EL CAJON, CALIF.



BLUE ROCK AUTO SERVICE

WE GIVE S & H GREEN STAMPS

2151 Hwy 80 Opp. Postoffice HI 5-9586 or 2132

Small Talk

By Cynthia Irvine
Age 12, 7th grade

Betsy and Barry McCall got to spend the last week of their vacation at Lake Tahoe with their dad and grandmother and her sister from Georgia. One of their borders Cathy Lander got to go too. They camped out and had a lot of fun.

Kenny Freedman left last Sunday for military academy in Long Beach. He gets to go there and then next year can go to the military one in Carlsbad.

SAVE ON GASOLINE ALPINE ROCKET

Self-Serve

2039 Hwy 80

HI5-2317

H. A. McKaskle General Contractor

Carpentry And
Concrete Work

HI5-3840

Rt. 1, Box 32488 Alpine

The Meachum Co.



Complete Line of Home Furnishings
Nationally Advertised Appliances

Inlaid Linoleum
Print Linoleum
By the Yard

Free Delivery

Hickory 2-2555

Window Shades
Custom Made
While You Wait

AMPLE FREE PARKING IN REAR

225 W. Main

El Cajon

EAST CO. FAIR BAR-B-Q

Sunday the 25th will see the annual fund raising barbecue at the Youth Center to raise money for prizes at the East County Fair in EC next season. Sponsors are the YC, Volunteer Firemen and the JC's of EC.

Diann Pekary is home from her vacation in Canada. She spent the whole summer up there seeing her grandmother and all of her relatives.

Jerry Webb called Mama Monday and told us their cow Elsie had its baby the day school opened so Mike named it Teachers' Pet. It is a little heifer and maybe they will keep it.

Mama finally got a clarinet for Cecile. Now she is looking for another one for Celeste. We are all going to be in the Alpine Band.

Linda Tyler called me and said she wouldn't be in school Monday. They moved to Lakeside but at least they didn't sell all their property and maybe will come back here

Don't forget kids to come to Brian Pierce's Horse Show tomorrow at 10. He lives at Alpine Oaks Ranch on South Grade Road across from the Button Box. All of the classes are free and I know we will have a good time. He even is going to give ribbons.

After a fortnight's leave, David Kramer is visiting his folks off Foss Road. He finished studies at Aviation Electronics

school, Memphis, will go to Glynco, Brunswick, Ga., for further work.

McGUFFIE'S SUNDRIES

MEDICAL PREPARATIONS - VITAMINS
COMPLETE LINE OF REVELON PRODUCTS

FOUNTAIN LUNCH

PAY LIGHT & PHONE BILLS HERE

2363 HWY 80

HI5-2121



HELEN THOMSEN'S

Cafe del Rey Mares

OPEN EVERY DAY
Hours 7:00 P.M.
EE-4-2161

ACCOMMODATIONS FOR
LARGE AND SMALL
PARTIES AND BANQUETS

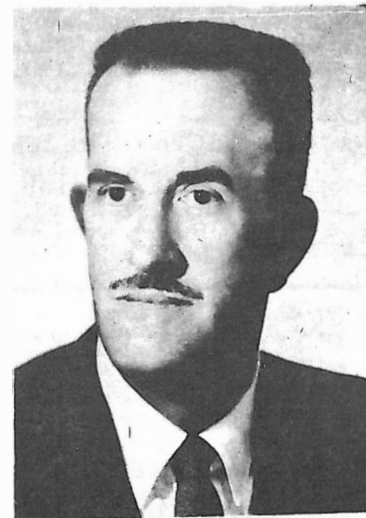
House of Hospitality
San Diego, California

El Cajon Mortuary and Valley Chapel



624 El Cajon Boulevard

El Cajon, California



GEORGE ROACH

President and Director
El Cajon Mortuary

- Licensed Lady Embalmer
- All Veterans Benefits Available
- Completely Air-Conditioned
- Funeral Insurance and Pre-Need Trust Accounts

HI 2-6677



CLASSIFIED ADS IN THE SUN HELP
SELL UNWANTED ARTICLES. TRY ONE.
ONLY 30¢ A LINE.

FAMILY OF NEWCOMERS IS THE
CLIFFORD BROWNES. 2405 TAVERN
ROAD, WHO BOUGHT THE STIEHM
PLACE, TOP ROW, FROM LEFT;
ROBERT, BROWNE, SKIPPY, LOWER
ROW, MRS. BROWNE, DON WESTCOTT,
WHO MOVES HERE SOON FROM LM,
HIS DAUGHTER, MRS. BEVERLY
LEONARD AND 11 MONTHS OLD SON
RICKEY, VISITING HERE FROM THE
BROWNE'S OLD HOME, BINGHAMTON,
NY. MRS. BROWNE HOLDS TINY, A
MINIATURE DACHSHUND. THE FAMILY
LOVES RIDING. HAS FIVE FINE
HORSES.

Admitted for the coming
school year at UC in Davis is
George F. Landt, Alpine, who
will major in prevet medicine.
He is a 1960 graduate of
ECVHS.

Estep's **ALPINE
OUTPOST**
Market-Trailer Park

Beer - Wine
4008 Hwy 80, 2 mi E of Alpine
Near the Willows

The FLOWER POT

HI3-1070, Eves. HI4-6950

Lee Buckingham, Mgr.

COMPLETE STOCK OF FRUIT & SHADE TREES

A Beautiful Selection Bird Baths

4.75 TO \$17.95

SPECIAL-- Shade Trees...5-gal. size, \$2.95

13767 Hwy 80

Johnstown

LEGAL NOTICES

ORDINANCE NO. 8

AN ORDINANCE OF THE BOARD OF DIRECTORS OF RIO SAN DIEGO MUNICIPAL WATER DISTRICT GRANTING A PETITION PROPOSING ANNEXATION OF CERTAIN AREAS DESIGNATED AS RIO SAN DIEGO MUNICIPAL WATER DISTRICT NO. 3 ANNEXATION, TO RIO SAN DIEGO MUNICIPAL WATER DISTRICT AND CONCURRENTLY THEREWITH TO SAN DIEGO COUNTY WATER AUTHORITY AND THE METROPOLITAN WATER DISTRICT OF SOUTHERN CALIFORNIA, SUBJECT TO CERTAIN TERMS AND CONDITIONS; DESCRIBING THE TERRITORY SO PROPOSED TO BE ANNEXED; SETTING FORTH THE SAID TERMS AND CONDITIONS FIXED AND IMPOSED BY THE BOARDS OF DIRECTORS OF RIO SAN DIEGO MUNICIPAL WATER DISTRICT, SAN DIEGO COUNTY WATER AUTHORITY AND THE METROPOLITAN WATER DISTRICT OF SOUTHERN CALIFORNIA; GIVING NOTICE, PROCLAIMING AND PROVIDING FOR THE HOLDING OF A SPECIAL MUNICIPAL WATER DISTRICT ELECTION FOR THE PURPOSE OF SUBMITTING TO THE QUALIFIED VOTERS OF SAID TERRITORY THE PROPOSITION OF ANNEXING SAID TERRITORY TO RIO SAN DIEGO MUNICIPAL WATER DISTRICT AND CONCURRENTLY THEREWITH TO SAN DIEGO COUNTY WATER AUTHORITY AND THE METROPOLITAN WATER DISTRICT OF SOUTHERN CALIFORNIA, SUBJECT TO THE TERMS AND CONDITIONS FIXED BY THE BOARD OF DIRECTORS OF RIO SAN DIEGO MUNICIPAL WATER DISTRICT, AND SUBJECT TO THE TERMS AND CONDITIONS FIXED BY THE BOARD OF DIRECTORS OF THE METROPOLITAN WATER DISTRICT OF SOUTHERN CALIFORNIA; ESTABLISHING VOTING PRECINCTS FOR THE PURPOSE OF SUCH SPECIAL ELECTION; DESIGNATING THE POLLING PLACES THEREOF; APPOINTING BOARDS OF ELECTION FOR SAID VOTING PRECINCTS; FIXING THE COMPENSATION OF THE ELECTION OFFICERS; AND, PROVIDING FOR THE CANVASS OF RETURNS OF SAID ELECTION.

BE IT ORDAINED BY THE BOARD OF DIRECTORS OF RIO SAN DIEGO MUNICIPAL WATER DISTRICT, as follows:

WHEREAS, Rio San Diego Municipal Water District, pursuant to Resolution No. 90 passed and adopted March 8, 1960, applied to the Board of Directors of San Diego County Water Authority for consent to annex the lands hereinafter described concurrently with their annexation to Rio San Diego Municipal Water District, and

WHEREAS, the Board of Directors of The Metropolitan Water District of Southern California did adopt its Resolution No. 5754 on August 9, 1960, whereby its consent to such annexation upon certain terms and conditions was granted, and

WHEREAS, the Board of Directors of San Diego County Water Authority did adopt its Resolution No. 620 on August 18, 1960, whereby its consent to such annexation upon certain terms and conditions was granted, and

WHEREAS, the petition of H.R. BESSE, et al, praying for the annexation of lands hereinafter described to Rio San Diego Municipal Water District and their concurrent annexation to San Diego County Water Authority and to The Metropolitan Water District of Southern California, was filed with the Secretary of Rio San Diego Municipal Water District on the 15th day of April, 1960, at five (5) o'clock P.M., and

WHEREAS, the Registrar of Voters in and for the County of San Diego, on the 21st day of April, 1960, issued his certificate that Two Thousand Three Hundred and Ninety-Nine (2,399) voters within the areas seeking to be annexed voted in the last election for the office of Governor of the State of California,

held on the 4th day of November, 1958, and

WHEREAS, the Secretary of the Board of Directors of Rio San Diego Municipal Water District, on the 21st day of April, 1960, issued his certificate that said petition of H.R. BESSE, et al, was signed by Three Hundred and Seventy-Five (375) duly registered voters residing within the areas seeking annexation; that said Three Hundred and Seventy-Five (375) voters comprise at least ten (10) percent of the number of voters within said territory voting for all candidates for the office of Governor of the State of California at the last such election held on the 4th day of November, 1958; that said petition is sufficient, and

WHEREAS, such annexation does appear to be feasible and in the best interests of Rio San Diego Municipal Water District and the areas proposed to be annexed and the residents, citizens and taxpayers thereof;

NOW, THEREFORE, the Board of Directors of Rio San Diego Municipal Water District pursuant to the provisions of Section 27 of the Municipal Water District Act of 1911, as amended, hereby finds, determines and orders as follows:

Section 1. That a petition was filed by H.R. BESSE, et al, with the Secretary of Rio San Diego Municipal Water District on April 15, 1960, seeking annexation of certain unincorporated areas to said Rio San Diego Municipal Water District and concurrently therewith to San Diego County Water Authority and The Metropolitan Water District of Southern California. Said areas seeking to be annexed are designated as Rio San Diego Municipal Water District No. 3 Annexation, Parcel No. 1 and Parcel No. 2, and are more particularly described in Section 2 hereof; that said petition was signed by duly registered voters residing within said areas seeking to be annexed numbering at least ten (10) percentum of the number of such voters voting for all candidates for the office of Governor of this State at the last general election prior to the filing of said petition.

Section 2. That the boundaries of the areas designated as Rio San Diego Municipal Water District No. 3 Annexation sought to be annexed as set forth in said petition are:

LEGAL DESCRIPTION OF RIO SAN DIEGO MUNICIPAL WATER DISTRICT NO. 3 ANNEXATION

PARCEL 1:

All that real property in the County of San Diego, State of California, more particularly described as follows:

Beginning at a point on the boundary of Helix Irrigation District and the San Diego County Water Authority, being a point on Course No. 106 of Parcel 1 of the Boundary Description of Helix Irrigation District, dated January 28, 1958, and recorded January 30, 1958, in Book 6930, at page 359 of the Official Records of the County of San Diego, said point also being at the intersection of the Northerly right of way line of the San Diego Flume Company as said Flume is shown on Subdivision of the "S" Tract of the Rancho El Cañon according to map thereof in Book 170, page 71 of Deeds, also as said right of way line is shown on Record of Survey Map No. 1634, on file in the office of the Recorder of said County, with the center line of the road which forms the Easterly and South-easterly boundary of Lots 3, 4 and 5 in Block 41 of said "S" Tract;

Thence along the boundary of said Helix Irrigation District and said San Diego County Water Authority, and along the center line of County Road, as shown on Map No. 1249, filed in the office of the County Recorder, County of San Diego, on April 11, 1910, the following courses:

1. South, 30° West, 277.87 feet;
 2. South 5° East, 440 feet;
 3. South, 15° West, 1,240 feet;
 4. South, 49° West, 480 feet;
 5. South, 25° West, 300.00 feet;
 6. South, 13° 30' West, 350.00 feet;
 7. South, 82° West, 200.00 feet;
 8. North 71° 50' West, 490.00 feet;
 9. South, 73° 10' West, 250.00 feet;
 10. South, 42° 40' West, 511.40 feet to the most Easterly corner of a parcel of land described in Deed to Ed Fletcher, recorded March 28, 1910, Book 491, page 54 of Deeds, records of said County;
- Thence, leaving said County Road and continuing along said boundary of Helix Irrigation District and the San Diego County Water Authority the following courses:
11. South, 78° 16' West 311.70 feet to the most Westerly corner of said land conveyed to Ed Fletcher, being also a point on the Northerly line of land described in Deed to A. L. Tadlock and wife, recorded May 3, 1910, in Book 490, Page 220 of Deeds, records of said County and shown on Record of Survey, Map No. 3306, filed March 1, 1954, in the office of the Recorder of said County;
 12. North 64°36' West along said Northerly line of said Tadlock land to the North and Westerly right of way line of the San Diego Flume Company shown on said Map, Subdivision of "S" Tract;
 13. In a general Southerly and Westerly direction, along said North and Westerly right of way line of San Diego Flume Company to the Northeasterly line of Lot 2, Block 40, as shown on said Map of the Subdivisions of the "S" Tract;
 14. Southeasterly along said Northeasterly line of said Lot 2 to a point distant thereon, 447 feet from the Southeasterly line of the San Diego Flume Company's right of way as said right of way is shown on the Map of the Subdivision of the "S" Tract of the Rancho El Cajon, in Deed Book 170, Page 71, Records of said County;
 15. South, 59° 52' West at right angles to the Northeasterly line of said Lot 2, a distance of 314 feet;
 16. North 30°08' West, to an intersection with the center line of the road bounding said Block 40 on the Northwest, as said Block 40 and said road are shown on said Map of the Subdivision of the "S" Tract;
 17. Southwesterly along the center line of said road to a point North 43°50' East 158 feet from the Northwesterly corner of said Lot 2, Block 40;
 18. South 24°52' East 880 feet to a point on the Northwesterly line of said Flume right of way;
 19. South 49°24' West, 157.5 feet along the Northwesterly line of said Flume right of way to a point on the Northeasterly line of Lot 1 of said Block 40;
 20. Southwesterly along the Northeasterly line of said Lot 1 and its Southeasterly prolongation to the center line of the road bounding said Lot 1 on the South;
 21. Westerly along the center line of said road to a point on the center line of the road

bounding Lot 3, Block 39, of said Subdivision of the "S" Tract on the East;

22. Southeasterly along the center line of said road bounding said Lot 3 on the East to the Easterly prolongation of the Southerly line of Lot 3, Block 39, of said Subdivision of the "S" Tract;
23. Westerly along said Easterly prolongation and along the Southerly line of said Lot 3 and its Westerly prolongation to an intersection with the center line of the road bounding Block 33 of said Subdivision of the "S" Tract, on the East;
24. Southerly along the center line of said road bounding said Block 33 on the East to a point in a line drawn parallel with and 354.10 feet Southerly at right angles from the Northerly line of Lot 2, Block 39 of said Subdivision of the "S" Tract;
25. Easterly along said parallel line to a point distant thereon 789.08 feet Westerly from the intersection of said parallel line with the Easterly line of said Lot 2;
26. Northerly at right angles to said parallel line, 35.00 feet to a point;
27. Easterly parallel with said parallel line, 105.27 feet to a point;
28. Southerly at right angles to said parallel line, 35.00 feet to a point on said parallel line;
29. Easterly along said parallel line to a point distant thereon 411.00 feet Westerly from the intersection with the Easterly line of said Lot 2;
30. Southerly, parallel to the Easterly line of said Lot 2, to a point in the Southerly line of said Lot 2 and distant thereon 411.00 feet Westerly from the Southeast corner thereof;
31. Easterly along the Southerly line of said Lot 2 to the Northeast corner of Lot 1 of said Block 39;
32. Southerly along the Easterly line of said Lot 1 to the Southeast corner thereof;
33. Southerly in a direct line to the Northeasterly corner of Block 36 of said Subdivision of the "S" Tract;
34. Southeasterly and Southerly along the Easterly line of said Block 36 to the Northerly right of way line of aforesaid San Diego Flume Co.;
- 34A. Southeasterly along said Northerly right of way line of the San Diego Flume Co. to an intersection with the Westerly boundary of Lot 2 of Block 38 of aforesaid Subdivision of the "S" Tract;
35. North 14°20' West along said Westerly boundary to the most Westerly corner of said Lot 2;
- 35A. North 34°35' East 258.8 feet;
36. South 86°10' East 343.8 feet;
37. North 12°7' West 227.2 feet;
38. North 63°10' East 122.3 feet;
39. North 77°36' East 252.1 feet;
40. South 81°58' East 124.1 feet;
41. South 9°23' West 171.8 feet;
42. South 66°0' East 376.8 feet;
43. North 47°11' East 163.8 feet;
44. South 40°37' East 123.8 feet;
45. South 8°48' West 382.1 feet;
46. South 32°06' East 234.8 feet;
47. South 17°48' West 235.2 feet;
48. South 55°41' West 139.0 feet;
49. South 28°19' West 208 feet more or less to an intersection with the center line of that certain County road shown on the Map of Road Survey No. 435 filed in the office of

the County Surveyor of said County.

50. Southwesterly along said center line to an intersection with the Northeasterly line of that certain tract of land conveyed to C. O. Nichols by deed recorded in Book 1139, Page 262, of Deeds, Records of said County;
 51. Southeasterly along the Northeasterly line of land so conveyed to the most Easterly corner thereof;
 - 51A. North 62°02' East (record North 66°03' East) to the Northeasterly line of Block 36 of said Subdivision of the "S" Tract;
 52. Southeasterly along said Northeasterly line of Block 36 and the Southeasterly prolongation thereof to its intersection with the center line of the road lying between Blocks 35 and 36 as shown on said Map of the Subdivisions of the "S" Tract;
 53. Southwesterly along the center line of said road to the center line of the road bounding Block 34 on the North;
 54. Southeasterly along the center line of said road to the Easterly prolongation of the Southerly line of Lot 4 of Block 34;
 55. Southwesterly along the said Easterly prolongation and along the Southerly line of said Lot 4 to the Easterly line of the Cuyamaca Water Company's Flume right of way;
 56. Southeasterly and Southwesterly along said Easterly line of the Cuyamaca Water Company's Flume right of way to an intersection with the Northerly line of Lot 1 of Block 34 of said Subdivision of the "S" Tract;
 57. Northeasterly along said Northerly line of said Lot 1 to the most Northerly corner thereof;
 58. Southerly along the Easterly line of said Lot 1 to an intersection with the Southeasterly line of aforesaid Subdivision of the "S" Tract;
 59. Northeasterly along said Southeasterly line of said Subdivision of the "S" Tract to an intersection with the Easterly line of the El Cajon Valley Homelands as shown on Map thereof No. 1177, Records of said County;
 60. Southerly along the Easterly line of said El Cajon Valley Homelands to a point from whence the Southwest corner of the Northeast Quarter of the Southeast Quarter of Section 8, Township 16 South, Range 1 East, S. B. B. M., bears South 1°22' West, 891 feet;
 61. South 89°55' East, 126.59 feet;
 62. South 36°58' East, 127.50 feet;
 63. North 73°46' East, 149.50 feet;
 64. South 62°46' East, 76 feet;
 65. North 76°30' East, 169 feet;
 66. North 45°50' East, 246.7 feet;
 67. North 77°26' East, 506 feet;
 68. South 62°48' East, 97 feet;
 69. South 88°38' East, 396 feet;
 70. South 66°40' East, 87 feet;
 71. South, 32°59' East, 263.71 feet;
 72. South, 1°22' West, 134.80 feet;
 73. North, 89°55' West, 906.58 feet;
 74. South, 1°22' West, 630.00 feet;
 75. North, 89°55' West, 1,050 feet to the East line of the aforesaid El Cajon Valley Homelands, according to said Map No. 1177;
 76. Southerly along said East line to an intersection with the Northerly line of the Southerly 330 feet of the Southeast Quarter of the Southeast Quarter of Section 8, Township 16 South, Range 1 East, S. B. B. M.;
 77. Easterly along said Northerly line to the East line of said Section 8;
 78. Southerly along said East line of Section 8 to its intersection with the Northerly line of the Southerly 218 feet of the Southwest Quarter of Fractional Section 9, Township 16 South, Range 1 East, S. B. B. M., said intersection being an angle point in the boundary line of Otay Municipal Water District;
- Thence leaving the boundary of Helix Irrigation District and continuing along the boundary of Otay Municipal Water District and the San Diego County Water Authority the following courses:
79. Easterly along said Northerly line of the Southerly 218 feet of said Fractional Section 9, to the center line of Road Survey No. 675, as shown on Sheet 4 of 4 sheets, filed in Book 3, Page 314 of Miscellaneous Maps in the office of said Recorder;
 80. Southwesterly along said center line of Road Survey No. 675 to the South line of said Fractional Section 9;
 81. Thence leaving the boundary of said San Diego County Water Authority and the Otay Municipal Water District, Easterly along the South line of said Fractional Section 9 to the West line of Section 15, Township 16 South, Range 1 East, S. B. B. M.;
 82. Thence Southerly along said West line of Section 15, to that certain line shown on Miscellaneous Map No. 318, filed in the office of the Recorder of San Diego County, as the adjudicated line between the Northwest Quarter of Southwest Quarter and the Southwest Quarter of Northwest Quarter of said Section 15, as per Superior Court Case No. 13522;
 83. Thence South 89°58'04" East along said adjudicated line 1334.01 feet;
 84. Thence South 0°59'51" East 102.15 feet to the South line of said Northwest Quarter of Section 15;
 85. Thence South 85°35'45" East along said South line 1414.80 feet to the North and South centerline of said section 15;
 86. Thence North, along said North-South center line of Section 15 to the East-West center line of the North half of said Section 15;
 87. Thence Easterly along said East-West center line of the North half of Section 15 and along the East-West center line of the North half of Section 14, Township 16 South, Range 1 East, S. B. B. M., to the North-South center line of said Section 14;
 88. Thence Southerly along said North-South centerline of said Section 14, to the East-West center line of said Section 14;
 89. Thence Easterly along said East-West center line of said Section 14, to the West line of the Northeast Quarter of the Southeast Quarter of said Section 14;
 90. Thence Southerly along said West line of the Northeast Quarter of the Southeast Quarter of Section 14 to the South line of said Northeast Quarter of the Southeast Quarter of Section 14;
 91. Thence Easterly along said South line of the Northeast Quarter of Southeast Quarter of Section 14, to the East line of said Section 14;
 92. Thence Northerly along said East line of Section 14, to the Southerly line of Section

12. Township 16 South, Range 1 East, S. B. B. M.
93. Thence Easterly, along said Southerly line of Section 12 to the Range line between Range 1 East and Range 2 East S. B. B. M.;
94. Thence Southerly along said Range line to the South line of Lot 2 of Section 18 Township 16 South, Range 2 East, S. B. B. M.; as shown on Township Plat 16 South, Range 2 East S. B. B. M., dated September 4, 1880, on file in the U. S. Surveyor General's Office, San Francisco, California
95. Thence Easterly along said South line of Lot 2, being also the South line of the Northwest Quarter of said Section 18 to the North-South center line of said Section 18.
96. Thence South, along said North-South center line of Section 18, to the South line of the North half of the Southeast Quarter of Section 18;
97. Thence Easterly, along said South line of the North half of the Southeast Quarter of Section 18, to the East line of said Section 18;
98. Thence North, along said East line of Section 18, to the South line of the Northwest Quarter of the Northwest Quarter of Section 17, Township 16 South, Range 2 East, S. B. B. M.;
99. Thence Easterly, along said South line of the Northwest Quarter of the Northwest Quarter of Section 17, to the East line of said Northwest Quarter of the Northwest Quarter of Section 17;
100. Thence North, along said East line of the Northwest Quarter of the Northwest Quarter of Section 17 to the North line of said Section 17;
101. Thence Westerly, along said North line of said Section 17 and along the North line of aforesaid Section 18, to the North-South center line of Section 7, Township 16, South, Range 2 East, S. B. B. M.;
102. Thence North along said North-South center line of Section 7 to the South line of section 6, as shown on said Township plat 16 South, Range 2 East S. B. B. M.;
103. Thence Easterly, along the Southerly lines of Sections 6, 5, 4 and 3, Township 16 South, Range 2 East, S. B. B. M. to the North-South center line of said Section 3;
104. Thence North, along said North-South center line of Section 3, to the East-West center line of said Section 3;
105. Thence Easterly, along said East-West center line of said Section 3, to the Westerly line of Section 2, Township 16 South, Range 2 East, S. B. B. M.;
106. Thence Southerly, along said Westerly line of Section 2, to the Southerly line of the North half of the Southwest Quarter of said Section 2;
107. Thence Easterly, along said Southerly line of the North half of the Southwest Quarter of Section 2, to the North-South center line of said Section 2;
108. Thence Northerly, along said North-South center line of Section 2, to the Southerly line of Lot 2 of said Section 2, as shown on aforesaid Township Plat 16 South Range 2 East, S. B. B. M.;
109. Thence Easterly, along said Southerly line of Lot 2 and along the Southerly line of
- Lot 1 of said Section 2, to the Easterly line of said Section 2;
110. Thence Northerly, along said Easterly line of Section 2, to the Township line between Township 15 South and Township 16 South, Range 2 East, S. B. B. M.;
111. Thence along said Township line to the Easterly line of Section 35, Township 15 South, Range 2 East, S. B. B. M.; as shown on Township Plat 15 South, Range 2 East, dated December, 12, 1881 on file in the U. S. Surveyor General's office, San Francisco California;
112. Thence Northerly, along said Easterly line of Section 35, to the Southerly line of the Northwest Quarter of the Northwest Quarter of Section 36, Township 15 South, Range 2 East, S. B. B. M.;
113. Thence Easterly, along said Southerly line of the Northwest Quarter of the Northwest Quarter of said Section 36 to the Easterly line of said Northwest Quarter of the Northwest Quarter of Section 36;
114. Thence Northerly along said Easterly line of the Northwest Quarter of the Northwest Quarter of Section 36 and continuing Northerly along the Easterly line of the West half of the Southwest Quarter of Section 25, Township 15 South, Range 2 East, S. B. B. M. to the East-West center line of said Section 25;
115. Thence Westerly along said East-West center line of Section 25, to the Easterly line of Section 26, Township 15 South, Range 2 East, S. B. B. M.;
116. Thence Northerly, along said Easterly line of Section 26 and continuing Northerly along the Easterly line of Section 23, Township 15 South, Range 2 East, S. B. B. M., to the Northerly line of the South half of Section 23;
117. Thence Westerly along said Northerly line of the South half of Section 23, to the Easterly line of Section 22, Township 15 South, Range 2 East, S. B. B. M.;
118. Thence Northerly, along said Easterly line of Section 22, to the Northerly line of said Section 22;
119. Thence Westerly, along said Northerly line of Section 22, to the Easterly line of the West half of the Southeast Quarter of Section 15, Township 15 South, Range 2 East S. B. B. M.
120. Thence Northerly along said Easterly line of the West half of the Southeast Quarter of Section 15, and along the Easterly line of the Southwest Quarter of the Northeast Quarter of Section 15 to the North line of the Southwest Quarter of the Northeast Quarter of Section 15;
121. Thence Westerly, along said North line of the Southwest Quarter of the Northeast Quarter of Section 15, and continuing along the North line of the Southeast Quarter of the Northwest Quarter of Section 15, to the West line of the Southwest Quarter of the Northwest Quarter of Section 15;
122. Thence Southerly, along said West line of the Southeast Quarter of the Northwest Quarter of Section 15, to the East-West center line of Section 15;
123. Thence Westerly, along said East-West center line of Section 15, and continuing along the East-West center line of

- Section 16, Township 15 South, Range 2 East, S. B. B. M. to the Westerly line of said Section 16;
124. Thence Southerly, along said Westerly line of Section 16, to the Northerly line of Section 20, Township 15 South, Range 2 East, S. B. B. M.;
125. Thence Westerly, along the Northerly line of Section 20, to the Easterly line of the Northeast Quarter of the Northwest Quarter of Section 20, Township 15 South, Range 2 East, S. B. B. M.;
126. Thence Southerly, along said Easterly line of the Northeast Quarter of the Northwest Quarter of Section 20, to the Southerly line of said Northeast Quarter of the Northwest Quarter of Section 20.
127. Thence Westerly along said Southerly line of the Northeast Quarter of the Northwest Quarter of Section 20, to the Westerly line of said Northeast Quarter of the Northwest Quarter of Section 20;
128. Thence Northerly along said Westerly line of the Northeast Quarter of the Northwest Quarter of Section 17, Township 15 South, Range 2 East, S. B. B. M.;
129. Thence Westerly, along said Southerly line of Section 17, to the Easterly line of Section 19, Township 15, South, Range 2 East, S. B. B. M.;
130. Thence Southerly, along said Easterly line of Section 19, to the Easterly prolongation of the Southerly line of Lot 1 of said Section 19.
131. Thence Westerly, along said Easterly prolongation and along said Southerly line of Lot 1 to the Westerly line of Section 19, Township 15 South, Range 2 East, S. B. B. M.
132. Thence Southerly, along said Westerly line of Section 19, to Corner No. 12 of Rancho El Cajon, as shown on Record of Survey Map No. 3010 filed March 2, 1953, in the office of the Recorder of said County, said corner No. 12 being also the most Easterly corner of the boundary of the first parcel of land conveyed to Ed Fletcher Co. by Deed dated March 19, 1942, filed in Book 1466, Pages 288 and 289 in the Official Records of said County;
- Thence along said boundary of the first parcel of land conveyed to Ed Fletcher Co., the following courses:
133. South 48°07' West along the Southeasterly line of said Rancho El Cajon as shown on said Record of Survey Map No. 3010, to the most Southerly line of said first parcel;
134. Leaving said Rancho El Cajon boundary South 86°55'50" West along said most Southerly line to the Southwest corner of said first parcel;
135. North 12°39'11" West 1320.00 feet to the Northwest corner of said first parcel, said corner being also a point on the Southerly line of the last parcel of land conveyed to Ed. Fletcher Co. by aforesaid Deed dated March 19, 1942, filed in Book 1466, Pages 288 and 289 in Official Records of said County;
136. Thence, leaving said first parcel South 86°55'50" West, 944.35 feet along said Southerly line of said last parcel to the Westerly line thereof;
137. Thence North 1°00" West along said Westerly line to a point on a curve having a radius of 200.00 feet, which is along the Southerly line of a 1.9 acre parcel as shown on the Record of Survey Map No. 2304 filed October 10, 1949, in the Office of the Recorder of said County;
- Thence leaving said boundary of land conveyed to Ed Fletcher Co. and proceeding along the Southerly line of said 1.9 acre parcel shown on Record of Survey Map No. 2304, the following courses:
138. Southwesterly along the arc of said curve through a central angle 9°15'03" a distance of 40.36 feet to a tangent point on said curve.
139. South, 58°57'05" West, 204.52 feet to the most Southerly corner of said 1.9 acre parcel as shown on said Record of Survey;
140. Thence leaving said 1.9 acre parcel Westerly along an arc of a curve through a central angle of 58°46'50" a distance of 102.59 feet, to the most Easterly corner of a 1.0 acre parcel as shown on aforesaid Record of Survey Map No. 2304;
141. Thence South, 21°28'25" West, 195.78 feet along the Easterly line of said 1.0 acre parcel to the Southerly line of said parcel;
142. Thence South, 80°46'10" West, 95.96 feet along said Southerly line of the 1.0 acre parcel to the Westerly line of said 1.0 acre parcel;
143. Thence North, 18°02'50" West, 275.18 feet along said Westerly line to the Southerly boundary of the 1.22 acre parcel as shown on the Record of Survey Map No. 1707, filed January 21, 1948, in the Office of the County Recorder of said County;
144. Thence leaving said 1.0 acre parcel South, 71°57'10" West, 172.07 feet along said Southerly boundary of the 1.22 acre parcel to an intersection with the Easterly line of 1.0 acre parcel as shown on said Record of Survey Map No. 1707;
145. Thence South, 18°02'50" East, 248.42 feet along said Easterly line of the 1.0 acre parcel to the Southerly line of said 1.0 acre parcel, as shown on said Record of Survey No. 1707;
146. Thence South, 80°46'10" West, 185.49 feet along said Southerly line to the most Westerly line of said 1.0 acre parcel;
147. Thence North, 26°42'10" West, 195.51 feet along said Westerly line of the 1.0 acre parcel to the Southerly line of the aforementioned 1.22 acre parcel as shown on the Record of Survey Map No. 1707;
148. Thence leaving the boundary of said 1.0 acre parcel South, 63°17'50" West, 30 feet more or less, along said Southerly line of the 1.22 acre parcel to the most Southwesterly corner of said parcel, being also the most Easterly corner of a 1.10 acre parcel as shown on said Record of Survey Map No. 1707;
- Thence along the boundary of said 1.10 acre parcel the following courses as shown on said Record of Survey Map No. 1707:
149. South 63°17'50" West, 12.71 feet to the beginning of a tangent curve having a radius of 200 feet;
150. Southwesterly along the arc of said curve through a central angle of 22°04'30" a distance of 77.06 feet to a point on tangent;
151. South 41°13'20" West, 77.74 feet;
152. North, 52°16'20" West, 291.48 feet to the Northerly line of said 1.10 acre parcel;
153. North, 69°53'50" East, 516.67 feet along said Northerly line to the beginning of a tangent

- curve to the right having a radius of 500 feet;
154. Easterly along the arc of said curve through a central angle of $9^{\circ}01'40''$ a distance of 78.78 feet;
155. North, $78^{\circ}55'30''$ East, 8.69 feet to the most Southerly corner of Record of Survey Map No. 1203 filed October 10, 1945, in the Office of the Recorder of said County;
156. Thence leaving said boundary of the 1.10 acre parcel as shown on said Record of Survey Map No. 1707 North, $2^{\circ}54'$ West a distance of 50.21 feet to the Southerly line of the Wahl Tract as shown on said Record of Survey Map No. 1203;
157. Thence South, $78^{\circ}55'30''$ West, 25.26 feet to the Southerly terminus of that certain line shown as having a bearing and distance of North $2^{\circ}45'$ West 393.34 feet on said Record of Survey Map No. 1203, being also the Southeastery corner of a 7.00 acre parcel shown on Record of Survey Map No. 1757 filed March 18, 1948, in the Office of the County Recorder of said County;
158. Thence South, $78^{\circ}55'30''$ West, 598.50 feet along the Southerly boundary of said 7.00 acre parcel shown on Record of Survey Map No. 1757 to an angle point, said angle point being also an angle point in the Southerly line of a parcel of land conveyed to H. Wahl by Deed dated October 14, 1909 on file in Deed Book 481, Page 68;
159. Thence along said Southerly line of the land so conveyed to H. Wahl, the following courses:
159. South, $68^{\circ}00'$ West, 400 feet;
160. South, $24^{\circ}00'$ West, 200 feet;
161. South, $71^{\circ}40'$ West, 1,022 feet;
162. South, $82^{\circ}30'$ West, 635 feet;
163. South, $77^{\circ}00'$ West, 1,115 feet;
164. North, $89^{\circ}30'$ West, 882.8 feet to an intersection with the Easterly line of that certain tract marked "W. E. Flynn" on said Map of Subdivision "S" Tract, Rancho El Cajon;
165. Thence leaving said Southerly line of the land so conveyed to H. Wahl Southerly along said Easterly line to the Southerly line of said "W. E. Flynn" Tract;
166. Thence South $89^{\circ}52'$ West along said Southerly line to the most Easterly corner of a parcel of land conveyed to Ed Fletcher by Deed dated January 24, 1919, on file in Deed Book No. 777, Page 11, in the Office of the County Recorder of said County;
167. Thence South, $29^{\circ}56'$ West, 290.20 feet along the Southeastery line of said parcel so conveyed to Ed Fletcher to the Southerly prolongation of the Westerly line of aforesaid "W. E. Flynn" Tract;
168. Thence Southerly along said Southerly prolongation of the Westerly line of "W. E. Flynn" Tract to the most Southerly line of a parcel of land conveyed to the Grossmont Park Company by deed dated October 28, 1929 on file in Book No. 1690, Page 420 of the Deeds Records of said County;
169. Thence South, $84^{\circ}38'$ West, 1,530 feet more or less, along said Southerly line of the parcel so conveyed to Grossmont Park Company to a point on the Easterly boundary of Los Coches Subdivision #2,

- as shown on Map No. 1582 filed June 2, 1913 in the Office of the County Recorder of said County;
170. Thence South, $27^{\circ}45'$ East along said Easterly boundary to the Southerly line of said Los Coches Subdivision #2;
- Thence proceeding along said Southerly line of Los Coches Subdivision #2, the following courses as shown on said Map No. 1582:
171. South, $50^{\circ}36'$ West, 322.3 feet;
172. North, $87^{\circ}11'$ West, 1,447.9 feet;
173. South, $76^{\circ}59'$ West, 812.6 feet;
174. South, $69^{\circ}54'$ West, 392.1 feet;
175. South, $53^{\circ}54'$ West, 177.1 feet;
176. South, $44^{\circ}52'$ West, 345 feet;
177. South, $47^{\circ}03'$ West, 400 feet to an intersection with the Northeastery line of land conveyed to Walter J. Davis by deed dated August 3, 1912 and recorded in Book 565 Page 363 of Deeds Records of said County;
178. Thence leaving the Southerly line of said Los Coches Subdivision #2, Southeastery along said Northeastery line of land so conveyed to Walter J. Davis to the most Easterly corner thereof, said corner being also the Northeastery corner of Parcel 1 of land conveyed to Howard W. Porfiris and Cardwell D. Porfiris by deed dated July 9, 1954 recorded in Book 5304, Page 209 of the Official Records of San Diego County;
179. Thence South $42^{\circ}25'15''$ East, 653.80 feet along the Easterly line of land so conveyed to Howard W. Porfiris and Cardwell D. Porfiris to the most Easterly corner of said parcel 1 of said conveyance, said most Easterly corner being also the most Easterly corner of a parcel of land conveyed to Hills, Arthur Clarke and Dora A. by deed dated January 23, 1941, recorded in Book 1140, Page 62 of the Official Records of said County;
180. Thence South, $27^{\circ}57'$ East, along the Easterly line of said parcel of land conveyed to Hills, to the Southeastery corner thereof, said Southeastery corner being also the Northeastery corner of a parcel of land conveyed to Lawrence, Fred and Nellie, by Deed dated April 28, 1944, recorded in Book 1722, Page 144 of the Official Records of said County;
181. Thence continuing South, $27^{\circ}57'$ East, along the Easterly line of said parcel of land conveyed to Lawrence, to the Southeast corner thereof;
182. Thence continuing South, $27^{\circ}57'$ East, to an angle point in the Northerly boundary of Record of Survey No. 1333, filed August 29, 1946 in the Office of the County Recorder of said County;
- Thence proceeding along the Northeastery boundary of said Record of Survey No. 1333 the following courses:
83. North, $73^{\circ}36'20''$ East, 244.75 feet;
184. South, $47^{\circ}18'30''$ East, 353.00 feet;
185. South $63^{\circ}20'20''$ East, 538.76 feet to the most Northerly corner of the boundary of Record of Survey No. 1335 filed August 29, 1946 in the Office of the County Recorder of said County;
- Thence proceeding along the boundary of said Record of Survey No. 1335, the following courses:
186. South, $62^{\circ}42'$ East 455.35 feet;
187. South, $87^{\circ}16'40''$ East, 902.03 feet to the

Easterly line thereof;

188. South, $21^{\circ}47'$ West, 706.13 feet along said Easterly line to the most Southeastery corner of said Record of Survey Map No. 1335;
189. Thence leaving said boundary of Record of Survey No. 1335, South $21^{\circ}47'$ West, along the Southerly prolongation of said Easterly line to an intersection with the Southerly line of a parcel of land described as an exception to a deed conveying land to Owen Wister, filed in Book 574, Page 17 of Deeds Records of San Diego County, said exception to the deed being described as follows:
- "Also excepting from said Lots Forty-eight (48) and Forty-nine (49) those portions thereof described as follows:
- Commencing at a point on the Southerly line of the El Monte Rancho, according to Map thereof No. 1146 filed in the Office of the County Recorder of said San Diego County August 26th, 1908, and on a line between Stations 22 and 23 of said Rancho, which is distant South $59^{\circ}09'$ West 98.5 feet from Station No. 23 of said Rancho; thence South $21^{\circ}26'$ East 1623.45 feet; thence South $27^{\circ}57'$ East 1795.3 feet; thence South $66^{\circ}57'$ East 2275.6 feet; thence South $69^{\circ}57'$ East 507.1 feet; thence South $77^{\circ}57'$ East 843.6 feet; thence South $0^{\circ}52'$ West 301.3 feet; thence South $80^{\circ}33'$ West 3758.0 feet; thence North $64^{\circ}58'$ West 3929.4 feet; thence North $43^{\circ}30'$ West 1460 feet; thence North $29^{\circ}10'$ West 95.2 feet to the Southerly line of the right of way of the San Diego Flume Company, as the same is now located; thence following said Southerly right of way line of said Flume Company in an Easterly and Northerly direction to its intersection with the Southerly line of said El Monte Rancho from whence Station No. 18 of said Rancho bears North $73^{\circ}50'$ East 23.5 feet; thence North $73^{\circ}50'$ East 23.5 feet to Station No. 18 of said Rancho; thence along the Southerly line of said Rancho South $85^{\circ}32'$ East 490 feet to Station No. 19; thence North $79^{\circ}11'$ East 430.2 feet to Station No. 20; thence North $63^{\circ}34'$ East 325 feet to Station No. 21; thence North $32^{\circ}09'$ East 430 feet to Station No. 22; thence North $59^{\circ}09'$ East 547.5 feet more or less to point of commencement."
190. Thence South, $80^{\circ}33'$ West along said Southerly line to its first intersection with the boundary of a 4.00 acre parcel shown on Record of Survey Map No. 1510, filed June 5 1947 in the Office of the County Recorder of said County;
- Thence proceeding along the boundary of said 4.00 acre parcel the following courses:
191. Southerly to the Southeastery corner thereof;
192. South $89^{\circ}33'$ West, 456.78 feet, to the Southwesterly corner thereof;
193. North, $0^{\circ}07'$ West, to an intersection with the Southerly boundary of the aforesaid-mentioned exception to the land so conveyed to Wister;
- Thence leaving said boundary of said 4.00 acre parcel shown on Record of Survey No. 1510 and proceeding along the Southerly line of said exception to the land so conveyed to Wister, the following courses:
194. South $80^{\circ}33'$ West to the most Southerly corner of said Wister exception;
195. North, $64^{\circ}58'$ West, 3,929.4 feet;

196. North, $43^{\circ}30'$ West, 1,460 feet;

197. North $29^{\circ}10'$ West, 95.2 feet to the most Westerly corner thereof;
198. Thence leaving the boundary of said exception of the land so conveyed to Wister, North $29^{\circ}10'$ West, to an intersection with the Northerly and Westerly line of the San Diego Flume Company right of way as shown on said Map of the Subdivision of "S" Tract of Rancho El Cajon, said intersection being a point on the boundary of the Helix Irrigation District and the San Diego County Water Authority;
199. Then Southwestery along said boundary of the Helix Irrigation District and the San Diego County Water Authority, being also along said Northerly and Westerly line of the San Diego Flume Company right of way to the point of beginning.

Excepting from the above territory all the property contained within the boundaries described as follows:

EXCEPTION, NO. 1 - TO PARCEL 1

The Crest Public Utility District territory, as included in the boundaries of the La Mesa, Lemon Grove and Spring Valley Irrigation District (now Helix Irrigation District) on August 3, 1948, and annexed to the San Diego County Water Authority and The Metropolitan Water District of Southern California on November 19, 1948, described as follows:

All that portion of Sections three (3) and ten (10) Township Sixteen (16) South, Range (1) East, San Bernardino Base and Meridian, in the County of San Diego, State of California, according to United States Government Survey, more particularly described as follows:

- Beginning at the Southwest corner of the Southeast Quarter of Northwest Quarter of said Section 3; thence Northerly along the West line of said Southeast Quarter of Northwest Quarter to the Northwest corner thereof;
- Thence Easterly along the North line of said Southeast Quarter of Northwest Quarter and along the North line of the Southwest Quarter of Northeast Quarter of said Section 3 to the Southwest corner of the East half of Northwest Quarter of Northeast Quarter of said Section 3;
- Thence Northerly, along the West line of said East half to the Northwest corner of said East Half of Northwest Quarter of Northeast Quarter;
- Thence Easterly along the North line of said East Half of Northwest Quarter of Northeast Quarter to the Northeast corner thereof;
- Thence Easterly along the North line of the Northeast Quarter of Northeast Quarter of Section 3, a distance of 512.00 feet;
- Thence Southerly and parallel with the West line of said Northeast Quarter of Northeast Quarter to an intersection with the Northerly line of the Southeast Quarter of Northeast Quarter of said Section 3;
- Thence Easterly, along said North line to the Northeast corner of said Southeast Quarter of Northeast Quarter;
- Thence Southerly, along the East line of said Southeast Quarter of Northeast Quarter to the Southeast corner thereof;
- Thence Southerly along the East line of the

Northeast Quarter of Southeast Quarter of said Section 3 to the Southeast corner of the North Half of said Northeast Quarter of Southeast Quarter;

10. Thence Westerly along the South line of said North Half of Northeast Quarter of Southeast Quarter to the West line of said Northeast Quarter of Southeast Quarter;
11. Thence Southerly, along the West line of said Northeast Quarter of Southeast Quarter, along the West line of the Southeast Quarter of Southeast Quarter of said Section 3 and along the West line of the Northeast Quarter of Northeast Quarter of said Section 10, to the Southeast corner of the Northwest Quarter of Northeast Quarter of said Section 10;
12. Thence Westerly, along the South line of said Northwest Quarter of Northeast Quarter of Section 10, to the Southwest corner of said Northwest Quarter of Northeast Quarter of Section 10;
13. Thence Northerly, along the West line of said Northwest Quarter of Northeast Quarter of Section 10, to the Southeast corner of the Southeast Quarter of Southwest Quarter of said Section 3;
14. Thence Westerly, along the South line of said Southeast Quarter of Southwest Quarter of Section 3, and along the South line of the Southwest Quarter of Southwest Quarter of said Section 3, to the Southwest corner of said Southwest Quarter of Southwest Quarter of Section 3;
15. Thence Northerly along the West line of said Southwest Quarter of Southwest Quarter of Section 3, a distance of 330.07 feet;
16. Thence Easterly, and parallel to the South line of said Section 3 to an intersection with the West line of the Southeast Quarter of Southwest Quarter of said Section 3;
17. Thence Northerly, along the West line of said Southeast Quarter of Southwest Quarter of said Section 3 and along the West line of the Northeast Quarter of Southwest Quarter of said Section 3, to the Southwest corner of aforesaid Southeast Quarter of Northwest Quarter of said Section 3, and the point of beginning.

PARCEL 2:

All that unincorporated territory situated in the County of San Diego, State of California, and the boundaries thereof are particularly described as follows:

Beginning at the Northeast corner of Lot 210 of El Cajon Valley Co's. lands as shown on Map No. 289, on file in the office of the Recorder of San Diego County, said corner being also an angle point designated Post C-4 on plat of Rancho El Cajon, filed in Book 1, Page 303 of Patents, in the office of the Recorder of said County, said corner also being an angle point in the boundary of the Rio San Diego Municipal Water District, organized and incorporated as a municipal water district on the 23rd day of November 1955, and being also the Southwesterly corner of Section 31, Township 14 South, Range 1 East, S. B. B. M., as shown on said Township Map dated 1881 on file in the U. S. Surveyor General's Office, San Francisco, California and being also the Northwesterly corner of Fractional Section 6 Township 15 South, Range 1 East, S. B. B. M. as shown on said Township Map dated May 20, 1881, on file in the U. S. Surveyor General's Office, San Francisco, California;

1. Thence leaving said angle point on the boundary of Rio San Diego Municipal Water District, Easterly along the Northerly line of said Fractional Section 6, being also the Southerly line of said Section 31 to the East line of Lot 4 of said Section 31;

2. Thence Northerly along said East line of Lot 4 and continuing Northerly along the East line of Lot 3 of said Section 31 to the East and West centerline of said Section 31, as said East and West centerline is shown on Record of Survey Map No. 3677 filed in the office of the Recorder of San Diego County.

3. Thence Easterly along said East and West centerline of Section 31 to the West line of Section 32, Township 14 South Range 1 East, S. B. B. M., as said Section 32 is shown on licensed Surveyor's Map No. 412, filed in the office of the Recorder of said San Diego County;

4. Thence Southerly along said West line of Section 32 to the East and West centerline of the South Half of said Section 32;

5. Thence Easterly along said East and West centerline of the South Half of said Section 32 to the Easterly line thereof;

6. Thence Southerly along said Easterly line to the Southeasterly corner of said Section 32 being also the Northwesterly corner of Fractional Section 4, Township 15 South, Range 1 East, S. B. B. M.;

7. Thence Easterly along the Northerly line of said Fractional Section 4, to an intersection with the center line of a county road, 60 feet wide as shown on Road Survey No. 826, on file in the office of the County Recorder of San Diego County as Miscellaneous Map No. 354.

8. Thence Southwesterly along said center line of Road Survey No. 826, following all of its various courses to the Northerly line of said Rancho El Cajon, being also a point in the boundary of said Rio San Diego Municipal Water District;

9. Thence Southwesterly along said boundary of the Rio San Diego Municipal Water District, being also along said Northerly line of Rancho El Cajon to an angle point designated Post C-3 on said plat of the Rancho El Cajon, said angle point being also the most Easterly corner of Lot 157 of said El Cajon Valley Co's. Lands, also being an angle point in the boundary of said Rio San Diego Municipal Water District;

10. Thence Northwesterly along said boundary line of Rancho El Cajon, being also along the Easterly line of said El Cajon Valley Co's. Lands, and being also along the boundary of said Rio San Diego Municipal Water District to the point of beginning.

The boundaries of Otay Municipal Water District, Helix Irrigation District, Rio San Diego Municipal Water District and the San Diego County Water Authority referred to herein, are such boundaries as the same existed at 12:00 o'clock on March 1, 1960, unless otherwise indicated.

CONTINUED

Section 3. That the Board of Directors of Rio San Diego Municipal Water District, subject to the terms and conditions hereinafter set forth in full in this Ordinance, does hereby grant the petition of H.R. BESSE, et al, for annexation of said lands hereinabove described and the concurrent annexation of said lands to San Diego County Water Authority and The Metropolitan Water District of Southern California.

Section 4. That the terms and conditions upon which such annexation may occur are as follows:

(a) That the terms and conditions of said annexation as herein set forth be approved by the majority of the voters voting at a Special Water District Election to be held at the time and place hereinafter set forth;

(b) That in the event of such annexation all pipelines, structures, connections and other facilities required for delivery of water in said lands from works, pipelines or other facilities owned or operated by Rio San Diego Municipal Water District, shall be constructed, provided and installed without cost or expense to Rio San Diego Municipal Water District, and Rio San Diego Municipal Water District shall be under no obligation to provide, construct or maintain such works;

(c) That in the event of such annexation:

(1) There shall be levied by Rio San Diego Municipal Water District special taxes upon taxable property within said areas in addition to the taxes elsewhere in the Municipal Water District Act of 1911, as amended, provided and authorized to be levied by Rio San Diego Municipal Water District;

(2) The aggregate amount to be raised by such special taxes shall be \$56,926.00;

(3) The number of years prescribed for raising such aggregate sum shall be five (5) years, commencing with the fiscal year 1961-62;

(4) Substantially equal annual levies will be made for the purposes of raising said sum over the period so prescribed.

(d) That in the event of such annexation and thereafter, a special water rate may be fixed from time to time by the Board of Directors of Rio San Diego Municipal Water District for the areas so annexed.

(e) That the terms and conditions fixed by the Board of Directors of San Diego County Water Authority upon which such annexation may occur to said San Diego County Water Authority, as set forth in said Resolution No. 620 adopted by the Board of Directors of said San Diego County Water Authority on August 18, 1960, be fully and completely complied with; that the terms and conditions so fixed and established by the Board of Directors of said San Diego County Water Authority are in substance as follows:

1. That said territory shall be annexed to the Rio San Diego Municipal Water District and to The Metropolitan Water District of Southern California concurrently with its annexation to the San Diego County Water Authority, and that such annexation shall be completed and all necessary certificates, affidavits, statements and maps required to be filed by or on behalf of the Rio San Diego Municipal Water District to effectuate such annexation shall be filed in the manner required by law on or before November 1, 1960.

2. That the terms and conditions fixed by the Board of Directors of The Metropolitan Water District of Southern

California upon which such annexation may occur to said Metropolitan Water District, as hereinabove in this resolution recited and as determined by said Resolution No. 5754 adopted by the Board of Directors of said Metropolitan Water District on August 9, 1960, be fully and completely complied with.

3. That in the event of such annexation:

a. There shall be levied by said San Diego County Water Authority special taxes upon taxable property within said territory, in addition to the taxes elsewhere in the County Water Authority Act authorized to be levied by said Authority;

b. The aggregate amount to be raised by such special taxes shall be \$57,100.00;

c. The number of years prescribed for raising such aggregate sum shall be ten years, commencing with the fiscal year 1961-1962; and

d. Substantially equal annual levies will be made for the purpose of raising said sum over the period so prescribed.

4. That in the event of such annexation all feeder pipe lines, structures, connections and other facilities required for the delivery of water to the said territory from the works owned or operated by the San Diego County Water Authority shall be constructed, provided and installed without cost or expense to the San Diego County Water Authority, which shall be under no obligation to provide, construct, operate or maintain such works.

(f) That the terms and conditions fixed by the Board of Directors of The Metropolitan Water District of Southern California upon which such annexation may occur to said The Metropolitan Water District of Southern California, as set forth in said Resolution No. 5754 adopted by the Board of Directors of said The Metropolitan Water District of Southern California on August 9, 1960, be fully and completely complied with; that the terms and conditions so fixed and established by the Board of Directors of said The Metropolitan Water District of Southern California are in substance as follows:

1. That said area shall be annexed to the San Diego County Water Authority and to the Rio San Diego Municipal Water District concurrently with the annexation of said territory to The Metropolitan Water District of Southern California, and such annexation shall be completed, and all necessary certificates, statements, maps and other documents required to be filed by or on behalf of said San Diego County Water Authority or by or on behalf of said Rio San Diego Municipal Water District to effectuate such annexation shall be filed in the respective offices required by law, on or before December 1, 1960.

2. That in the event of such annexation:

a. There shall be levied by said Metropolitan Water District special taxes upon taxable property within said area, in addition to the taxes elsewhere in the Metropolitan Water District Act (Stats. 1927, page 694, as amended) authorized to be levied by said Metropolitan Water District;

b. The aggregate amount to be raised by such special taxes shall be \$289,890.00;

c. The number of years prescribed for raising such aggregate sum shall be thirty years, commencing with the fiscal year 1961-1962;

annual levies will be made for the purpose of raising said sum over the period so prescribed.

3. That in the event of such annexation, all feeder pipe lines, structures, connections, and other facilities required for the delivery of water to said territory, from works owned or operated by said Metropolitan Water District, shall be constructed, provided and installed without cost or expense to said Metropolitan Water District, and said Metropolitan Water District shall be under no obligation to provide, construct, operate or maintain such works.

Section 5. That there shall be submitted to the qualified voters of the territory proposed to be annexed, as described in Section 2 hereof, at a Special Municipal Water District Election to be held therein, the proposition of annexing said areas to Rio San Diego Municipal Water District and concurrently therewith to San Diego County Water Authority and The Metropolitan Water District of Southern California, subject to the said terms and conditions fixed by the Board of Directors of Rio San Diego Municipal Water District, the Board of Directors of San Diego County Water Authority and the Board of Directors of The Metropolitan Water District of Southern California.

Section 6. An election is hereby called, ordered and proclaimed to be held on Tuesday, the 27th day of September, 1960, pursuant to the Municipal Water District Act of 1911, as amended, and other laws applicable thereto, for the purpose of submitting to the qualified voters of said Rio San Diego Municipal Water District No. 3 Annexation, the proposition of annexing said areas to Rio San Diego Municipal Water District, to San Diego County Water Authority and The Metropolitan Water District of Southern California, subject to the terms and conditions fixed by the Board of Directors of Rio San Diego Municipal Water District, as set forth in Section 4 hereof, and subject to the terms and conditions fixed by the Board of Directors of San Diego County Water Authority as set forth in Section 4 (e) hereof, and also subject to the terms and conditions fixed by the Board of Directors of The Metropolitan Water District of Southern California as set forth in Section 4 (f) hereof.

The ballots to be used in said election called for herein, in addition to such other matters as are required by law, shall contain the following:

MEASURE SUBMITTED TO VOTE OF VOTERS

Shall the areas called "Rio San Diego Municipal Water District No. 3 Annexation" be annexed to Rio San Diego Municipal Water District and to San Diego County Water Authority and to The Metropolitan Water District of Southern California, subject to the terms and conditions fixed by the Boards of Directors of said Rio San Diego Municipal Water District, said San Diego County Water Authority and said The Metropolitan Water District of Southern California?

YES

NO

Section 7. Notice is hereby given and proclamation is hereby made

to the qualified voters residing within said areas proposed to be annexed of the holding of said Special Municipal Water District Election on Tuesday the 27th day of September, 1960, at 7:00 o'clock A.M.; notice is hereby given and proclamation is hereby made of the terms and conditions as set forth in Section 4 hereof, upon which said areas may be annexed to and become a part of Rio San Diego Municipal Water District, and may be annexed to and become a part of San Diego County Water Authority, and may be annexed to and become a part of The Metropolitan Water District of Southern California.

Section 8.

(a) For the purpose of holding said Special Municipal Water District Election on September 27, 1960, Special Municipal Water District Election Precincts No. 1, No. 2, No. 3, No. 4, and No. 5, are hereby formed.

(b) Precinct No. 1 shall consist of the following San Diego County General Election Precincts: Portions of Precincts CS-1, CS-3, FN-1, FN-2, LV-2, MR-5A and MR-6A.

i. The polling place for said Special Election Precinct No. 1 shall be at the Longbehn residence located at 373 Al Bahr Road, La Cresta, in the County of San Diego.

ii. The election officers for said Special Election Precinct No. 1 shall be as follows:

Inspector: Elizabeth M. Longbehn
Judge: Elsie E. Tye
Clerk: Charles R. Tye
Clerk: Mary J. Bray

(c) Precinct No. 2 shall consist of the following San Diego County General Election Precincts: All of Precincts DH-2, DH-3 and DH-5; Portions of Precincts DH-1, DH-4 and HR.

i. The polling place for said Special Election Precinct No. 2 shall be at the Harbison Canyon Community Hall located on Noakes Street, Harbison Canyon, in the County of San Diego.

ii. The election officers for said Special Election Precinct No. 2 shall be as follows:

Inspector: Marguerite Hopkins
Judge: Dorothy H. Baker
Clerk: Hazel Gibb
Clerk: Beulah F. Culver

(d) Precinct No. 3 shall consist of the following San Diego County General Election Precincts: All of Precincts AP-1A, AP-1B, and AP-2; Portion of AP-3.

i. The polling place for said Special Election Precinct No. 3 shall be at the Alpine Youth Center, located on Highway 80, Alpine, in the County of San Diego.

ii. The election officers for said special Election Precinct No. 3 shall be as follows:

Inspector: Paul C. Davis
Judge: Harry A. Colby
Clerk: Vivian E. Jungnitsch
Clerk: Helen P. Hallett

(e) Precinct No. 4 shall consist of the following San Diego County General Election Precincts: Portions of Precincts AP-4 and AP-5.

i. The polling place for said Special Election Precinct No. 4 shall be at the Community Church, Fuller Hall, located on Marshall Road,

Alpine, in the County of San Diego.

ii. The election officers for said Special Election Precinct No. 4 shall be as follows:

Inspector: Frank J. Doerr
Judge: Mava Wilson
Clerk: Ruth F. Chynoweth
Clerk: Myrtle Ingels

(f) Precinct No. 5 shall consist of the following San Diego County General Election Precincts: Portion of Precinct Lakeside 10.

i. The polling place for said Special Election Precinct No. 5 shall be at the Hamlet Ranch, located on Barona Road, in the County of San Diego.

ii. The election officers for said Special Election Precinct No. 5 shall be as follows:

Inspector: Ernest H. Hamlet
Judge: Patricia A. Hamlet
Clerk: Louise Hamlet
Clerk: Rose M. Castro

(g) Rental to be paid for each of the aforementioned polling places, if any, is hereby fixed at \$8.00. All of the persons above named are hereby appointed as such election officers of Special Municipal Water District Precincts designated and compensation is hereby fixed at \$12.00 for each Inspector and \$10.00 for each Judge and each Clerk.

Section 9. Each of said polling places will be open on the day of said election from the hour of 7:00 o'clock A.M. until the hour of 7:00 o'clock P.M. of said day, when the polls will be closed, except as provided for in Section 5734 of the Election Code of the State of California.

Section 10. The Secretary of Rio San Diego Municipal Water District is hereby authorized, directed and instructed to make all arrangements for the holding and conducting of said Special Municipal Water District Election in accordance with the provisions of the Election Code of the State of California, and of the Municipal Water District Act of 1911, as amended, relating to the holding and conducting of said Special Election, the qualifications of electors, the manner of voting, and the duties of election officers, and said election shall be conducted, the votes received, the votes counted, the returns canvassed and the results thereof ascertained, determined and declared, all in the manner required by the Election Code of the State of California except as otherwise provided by the Municipal Water District Act of 1911, as amended, and as to said exceptions, said Municipal Water District Act of 1911, as amended, shall govern the holding of said election.

Section 11. The canvass of the returns of said special Water District Election shall be made and conducted by the Board of Directors of Rio San Diego Municipal Water District at a meeting to be held for that purpose on the 11th day of October, 1960, at the hour of 7:30 o'clock P.M. of said day at the office of the Lakeside Irrigation District, located on the Northeasterly side of Los Coches road, one and one-half blocks southeasterly of Woodside Avenue in Lakeside Townsite, San Diego County. If it be determined upon the canvassing of the votes cast at such special Municipal Water District Election on the proposition so submitted to the qualified voters of said District that said proposition received the affirmative vote

of a majority of the qualified voters of said Rio San Diego Municipal Water District No. 3 Annexation voting on such proposition at said election, the Board of Directors of Rio San Diego Municipal Water District by and through the President and Secretary thereof shall certify the results of such election on such proposition to the Secretary of State, to the County Recorder of San Diego County, and to the Board of Directors of San Diego County Water Authority, together with a legal description of the boundaries of the territories to be annexed, accompanied by maps or plats indicating such boundaries, and such certificate shall include a record of the proceedings by which such territory has been annexed to Rio San Diego Municipal Water District, to San Diego County Water Authority and to The Metropolitan Water District of Southern California. The Board of Directors hereby authorizes, instructs and directs its President and its Secretary to do and perform all such acts, including said certification, required by law to be done or taken by or on behalf of Rio San Diego Municipal Water District to accomplish such annexation and to record such annexation fully effective for all purposes.

Section 12. A copy of this Ordinance shall be proper notice of said proposed annexation and election as published and the Secretary of the Board of Directors of Rio San Diego Municipal Water District is hereby authorized and directed to give such notice by causing a copy of this Ordinance to be published once a week for three successive weeks, the last publication of which shall be not more than four weeks or less than one week prior to the date of said election, in a newspaper of general circulation, printed and published in San Diego County.

Section 13. This Ordinance shall take effect and be in force from and after its adoption.

ORDERED, ADOPTED AND APPROVED

by the Board of Directors of the Rio San Diego Municipal Water District at a regular meeting held at the office of the Lakeside Irrigation District on the 23rd day of August, 1960, by the following vote, to wit:

AYES: Price, Pumphrey, Rakowski, Walker
NOES: None
ABSENT: Ribley

S/ Charles C. Price

President of the Board of Directors of Rio San Diego Municipal Water District.

ATTEST: S/ Jonas W. Pumphrey,

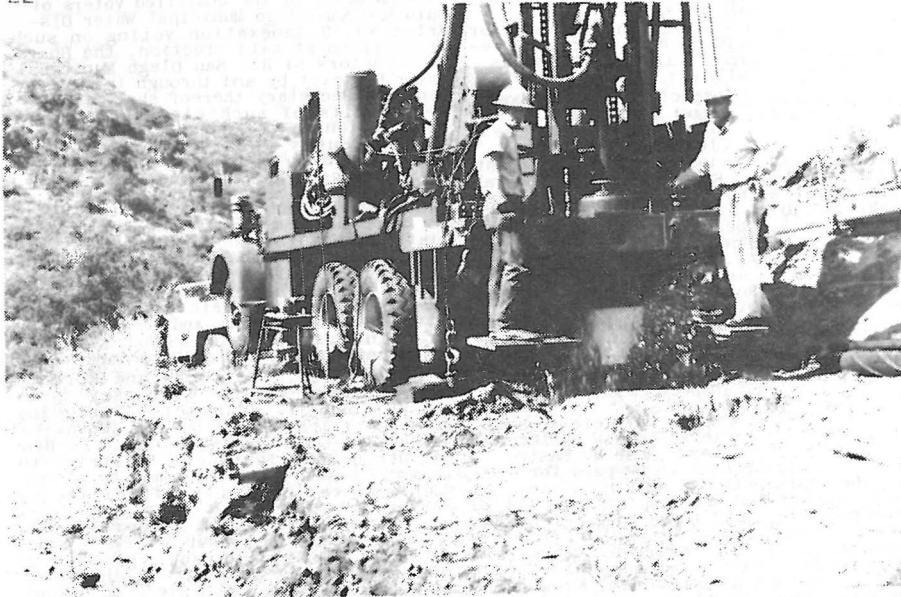
Secretary of the Board of Directors of Rio San Diego Municipal Water District

CERTIFICATE OF PRESIDENT AND SECRETARY

WE HEREBY CERTIFY that the foregoing is a full, true and correct copy of ORDINANCE NO. 8, adopted by the Board of Directors of Rio San Diego Municipal Water District at a regular meeting held on the 23rd day of August, 1960. IN WITNESS WHEREOF, we have set our hands and seal of the Rio San Diego Municipal Water District this 23rd day of August, 1960.

S/ Charles C. Price
President

(SEAL) S/ Jonas W. Pumphrey
Secretary



Son: "Why do dollars have eagles on them?"

Dad: "They're symbolic of swift flight."

Kip's Cafe

FINE CHINESE FOOD

Delicious, Oriental, Exotic

ORDERS TO GO. ALSO HOME DELIVERY
Closed Monday - Free Parking

1058 E. Main, El Cajon, HI2-1211

HERE IS ONE OF THREE HUGE MODERN AIR DRILLS NOW IN OPERATION BY B & R DIAMOND DRILLING CO., OF EC. THIS ONE BROUGHT IN THE UNUSUALLY FINE WELL FOR HOVAL BOSTWICK, HEAD OF B & R AT HIS HC PROPERTY. OPERATING IT ARE (LEFT, ARTHUR BUTTS OF EC, IN CHARGE, AND WDWIN GARNER, OF SANTEE. NOTE STEAM POURING OUT AT LEFT. HUNDREDS OF GALLONS PER MINUTE!

I REALLY DON'T LIKE TO REPEAT GOSSIP - BUT THERE'S NOTHING ELSE YOU CAN DO WITH IT.

ATTENTION!

Alpine and the Mt. Empire

Fast - Courteous - Dependable

PROPANE GAS

DELIVERY SERVICE for HOME & RANCH

BOTTLE GAS - BULK TANK OR METERED SYSTEM

Ask about our new policy of loaning tanks to qualified customers

Mutual Liquid Gas & Equipment Co. Inc.

7370 Broadway

HO6-8466

Lemon Grove

PTA HOSTS TEACHERS

Alpine's new PTA board gave a luncheon last Thursday to Alpine's teaching staff in the school cafeteria. President Grace Wilcox and her officers served a delicious luncheon. Helping her were Wanda Frey, Mary Wake, Jerry Webb, Frances Caldwell, Shirley Dyer, Leta Judd and Mrs. C.T. Gilley. Mrs. Wilcox also extended a thank you to those who participated but could not be present.

FIRE NEAR LOVELAND

Saturday was busy here with two brush fires, a small one on Victoria Dr., and a big one near Lake Loveland. Six bombers flew soda drops into the hot spots, worked over by crews from Viejas Honor Camp. No buildings were hit in the 25-acre fire.

Jimmy Gavin is back from the hospital where he had his appendix removed following a painful attack.

HOBBS-BARANOV

Annual

WATCH

Exchange Event

During this Event We Will Give A Liberal Trade-In Allowance Toward the Purchase of Any Watch in Our Stock:

HAMILTON, ELGIN BULOVA, WITTENAUER, LONGINES

El Cajon's Family Jeweler
Watches Diamonds



GUARANTEED WATCH REPAIRING
S & H Green Stamps

115. W. Main El Cajon HI4-3628

24 Hour Service

"We Never Close!"

Complete SHOP SERVICE

Free Estimates
PICKUP & DELIVERY

Free Loan Cars

Automatic Transmission
SERVICE

Arc & Gas Welding
STEAM CLEANING
Parts & Accessories

Complete Body Shop

DOUGLAS
PETROLEUM PRODUCTS

KEROSENE
CLEANING SOLVENTS
WHITE GAS - DIESEL FUELS
TRAILER RENTALS
Local & Cross Country
All Credit Cards Accepted

YOUR FAVORITE BRAND OF
Cigarettes Just 23¢

MURPHY'S AUTOMOTIVE

HI3-3373

Henry Murphy, Owner

E.W. Stephens (Steve), Gen. Mgr

13797 Hwy 80, Johnstown

**AZTEC
WATER SERVICE**
Pure Spring Water
Coolers Loaned - Free Delivery
H13-1413 Lakeside

MIXED DRINKS
SHORT ORDERS
CASINO INN
1155 Hwy 80 H15-9581

**WE NEED LISTINGS
ALPINE BRANCH**
LA MESA REALTY CO.
BILL BROWN, Mgr.
2237 HWY 80 H15-3603

CARROT
AND OTHER VEGETABLE JUICES
By Glass or Any Amount to Go

Mart & Jackie's
ALPINE CAFE
OPEN 6 AM TO MIDNIGHT
BREAKFAST SERVED ALL DAY
HOME OF ORIGINAL SMOKED SHRIMP
2225 Hwy 80 H15-9596

SPECIAL PRICE TILL OCT. 15
OAK FIREPLACE WOOD
\$30 per Cord
DELIVERED - 16 & 24 INCH
WOOD KING Wood Yard
1606 E. Broadway Cor. Hwy 80 El Cajon H12-1881

Big Funfilm at EC House

One of the most laughingest films ever made is at the EC theatre "When Comedy Was King",



GLORIA SWANSON IN A SCENE FROM ONE OF HER GREAT COMIC HITS. SHE IS TODAY ONE OF THE BEST PRESERVED OF THE OLD GUARD, WATCHES HER HEALTH, EATS ORGANIC FOODS.

featuring all-time greats in the laff business. Topping the show are immortals as Charlie Chaplin, Mabel Normand, Fatty Arbuckle, Buster Keaton, Gloria Swanson, Charlie Chase, and many others in this melange of mirth, which Manager Frank Beres says will be doubly appreciated by those who remember the old silents of the 20's. It is a 20th Century Fox production.

"Character is what a man is when he thinks he is not watched."



JIM BEAR, LEFT, ASSEMBLY CANDIDATE AND WALTER WENCKE, RIGHT, OUT FOR REP. BOB WILSON'S SEAT AT WASHINGTON. PAY VISIT TO ALPINE'S BOB WILSON (R), CENTER, WHO GREETES THEM ALTHOUGH THEY'RD DEMOS! A DOZEN WERE IN THE CANDIDATES' PARTY FOR BREAKFAST AT ALPINE CAFE.

PTA MEETS SEPT. 20
The first meeting for Alpine's PTA will be Sept. 20 at 8 in the school auditorium, presided over by President Grace Wilcox. The program will be a community sing and meeting faculty and new and old friends.

NORMAN C. ROBERTS Co.

Member New York Stock Exchange

*Brokers and Dealers In Securities of
America's Leading Companies*

494 N. MAGNOLIA

H12-5557

Complete Boardroom Facilities

*East County's Only New York
Stock Exchange Member*

The Rev. H.E. Hunt and wife are back in their vacation trailer from a 3-months' trip to Spokane, Portland, Cannon Beach, Ore., and Mt. Hermon, Cal. They live in a big mobile-home at Irvine's Trailer Estates.

ROOKLIDGE MOTOR CLINIC

Featuring-

All types of automotive repairs and services on all makes of cars

USED CARS & TRUCKS

8861 La Mesa Blvd.

HO3-7773

Nite Emerg. HO6-8517

MALLICOAT NURSING HOME
STATE LICENSED

Conscientious Service
Balanced Meals
Congenial Atmosphere

24-HOUR NURSING SERVICE

Reasonable Rates

Depending on Care Required
Mr. and Mrs. Lawrence Mallicoat

OWNERS & OPERATORS

2733 hwy 80

HI5-2771

Visit Our New Store in Beautiful College Center



Himmel's

CAMERA SHOP

Photostat Copies While You Wait!

118 E. Main, El Cajon, HI2-9897 Also College Grove, JU2-6721

COMPLETE APPAREL SHOPS FOR WOMEN AND MISSES

EVELYN WIGTON'S

AND REMEMBER. THERE IS NEVER AN EXTRA CHARGE WHEN YOU SAY "CHARGE IT"

145 SOUTH MAGNOLIA
EL CAJON

OPEN MONDAY & FRIDAY NIGHTS

HIckory 4-2177

QUALITY APPAREL SHOPS FASHION

SMART SHOPS IN EL CAJON . LEMON GROVE . NATIONAL CITY . PACIFIC BEACH

Dowdy Quits Board

Although his term would have run till next year, George A. Dowdy, member of the school board, resigned because of a recent directive from the state attorney general's office. He is a sargent in the CHP, is a resident officer here, where he has lived for many years and taken leading parts in civic activities. The opinion is that no state employee can hold an elective office; this one is without pay. He has served a total of 10 years on the board.

In his place the county board approved the appointment of Robert R. Jackson, a forestry foreman at Ramona. He lives at 817 Harbison Canyon Road.

Note- Imperceptably the US is approaching the status of a state controlled nation with here and there little things being controlled by government. We see no reason why a civic-minded, stable citizen, as Dowdy, and others, must be deprived of serving on various duties.-CI

A government expert is one who can complicate simplicity.

WORK KEEPS STEADY

Although Alpine has no mass subdivisions or other building booms, general improvement keeps steady, reports H.A. McKaskle, contractor who carries on carpentry, cement work, rebuilding and so forth.

With the coming of water, which can be in about two years, there will be a definite surge of new building, but in the meantime, many owners of older homes are steadily remodeling and improving.

BAPTISTS BUILD TOMORROW

Saturday a crew of artisans will start remodeling the garage at their church, 2530 Hwy 80, one more step in converting the former residence into a full fledged church property. The building will be transformed into a Sunday School room.

For Trailers and Residences Patios and Commercial

BEAUTIFUL, PERMANENT ALUMINUM AWNINGS

Manufactured By

EL CAJON AWNING & MFG Co.

HI 2-1648

845 El Cajon Blvd.

El Cajon,

M.H. Smith
PRESCRIPTION PHARMACY
113 W. MAIN EL CAJON TELEPHONE H14-3135
WE GIVE S & H GREEN STAMPS

The FRUIT BOWL
MOUNTAIN PEACHES
Other Fresh Fruits

H15-3329

15,430 Hwy 80 Alpine

Road Oiling

Fred D. RUSHING

GRADING & EQUIPMENT RENTAL
BACKHOE WORK

ROADS DRIVEWAYS BUILDING SITES TRENCHING ALPINE, CALIF. H15-2214



Mitt Paris

Helpfulness to the bereaved family
* * * * *
We relieve you of every responsibility
* * * * *
Spare you of every detail
* * * * *
Anticipate every need
* * * * *
Observe every wish

PARIS MORTUARY

Member San Diego County Independent Funeral Directors Assn.

374 N. MAGNOLIA AVE.
HI 4-5195, EL CAJON, CALIF.

HAIG C. MERIGAN, D.D.S.

DENTIST

PHONE
OFF. HICKORY 4-2139
RES. HICKORY 4-7619

203 PRESCOTT STREET EL CAJON, CALIF

R. R. "Bob" Fulton

LICENSED PLUMBER

NEW WORK . REPAIRS

P.O. Box 292

H15-2536

ALPINE

Dental Plates

All Types of Dentistry
No Charge for Credit
No Money Down
No Appointment Needed
Low Prices, Fast Service
Open Daily
Including Saturday

345 W. Main
El Cajon

DR. FREE
FAMILY CREDIT
DENTIST

HI 2-5546

Open For Business

MAIN STREET CAR WASH

111 S. First at Main, El Cajon HI4-1641

JOHN & HAZEL SCHAFFER, OWNERS

WASH POLISH WAX

"In With GRIME . . . Out With SHINE"

OPEN DAILY

8:30 A.M. to 5:00 P.M.

OPEN SUNDAY

9:00 A.M. to 1:00 P.M.

SCHOOL STORY from page 1

no half-day sessions".

It is believed that many families may still be on vacation as the enrollment for last year's first day was 602. However the percentage of vacancies here, like elsewhere in the county, is up and many families have moved away.

Seventh and eighth grades have been changed to the new school where they now have advantages of the auditorium, stage, band, glee club, and other facilities not at the old building. First and second grades which do not normally take part in band, chorus, student government, group assemblies and so on, will go to the old school, but will be bussed to the cafeteria for lunch.

A double trailer truck with 13 tons of hay were damaged in a spectacular midnight fire on Hwy 80 near Flinn Springs Saturday. Half the hay was saved. Fire was started, forestry officers said, apparently by a cigarette flipped by a passing driver.

AIRPORT CAFE

AIR-CONDITIONED

Mixed Drinks & Cocktails
Bring the Family for Our
Delicious Sunday Specials.

Open 6 am to 9 pm

Banquet Room for 150
GILLESPIE FIELD HI2-3567

Burma Missionary Speaks

Because of the state convention at the First Baptist Church in SD, Oct. 13-15, the church dinner and missionary meeting of Alpine's church will be held on Oct. 1, at 6 p.m., 2530 Hwy 80. Speaker will be Miss Faith Hatch, missionary from Burma, who will retell some of her interesting experiences.

Assessor Opens Branch

To serve the rapidly growing cities and communities of the back country, John McQuilken, county assessor, yesterday opened a branch, 248 W. Main in EC. It will be open from 8 to 5 daily except Saturday, Sunday and holidays.

SCHOOL LANDS BUS ENGINES

Two new, unused White motors, complete and valued at \$1700. each, have been bought from state surplus for only \$225. each, the Alpine school board learned at its last session. This will upgrade two school buses.

She—Darling, I saw the sweetest little hat in the store today . . .

He—Put it on and let's see what it looks like.

EYES EXAMINED - BROKEN LENS REPLACED - VISUAL TRAINING

H. DUDLEY WINN, O. D.

HICKORY 4-6129

LOUIS M. WINN, O. D.

SINCE 1912

OPTOMETRISTS

120 REA AVE.

FIRST STREET NO. OF MAIN

EL CAJON, CALIF.



NEW LINE- House of Randall Cosmetics

PURE- No Wax, No Filler, No Chemicals, No Coal Tar
Made in Hollywood Exclusively for Health
Food Stores from finest Fruit & Vegetable
Oils & Herbs.

VALLEY HEALTH FOOD STORE

SHOP HERE FOR THE HEALTH OF YOUR FAMILY

133 Prescott, El Cajon HI4-8447 W. L. Houghton, owner

CAKES & PASTRIES

For Weddings, Birthdays
and Special Occasions

TASTY BAKE SHOP

144 E. MAIN HI4-3686 EL CAJON

Dr. Frank J. Bornowski, D.C.

Better Health Thru Chiropractic

H15-2169

1981 Arnold Way

Closed Wed.

Alpine, Calif.

SUNDAYS & HOLIDAYS BY APPT.

Established 1875

PERCY H. GOODWIN CO.

NOW OFFERS TO THE HEARTLAND
AREA THROUGH ITS EL CAJON
OFFICES COMPLETE REAL ESTATE
& INSURANCE SERVICE. SALES-
DEVELOPMENT - LEASING - AP-
PRaisal - FINANCING SUB-
DIVISION - INSURANCE. LIST-
INGS PROMPTLY CHECKED.

PERCY H. GOODWIN Co.

COMPLETE PROPERTY
INSURANCE SERVICE

490 N. Magnolia

HI2-8871

El Cajon

SUBSCRIBE TO THE SUN, \$2. A YEAR

AMERICAN HOMES, Inc.

BUILDS ON YOUR LOT
Homes for every pocketbook

100% FINANCING

BUILDING CONSULTANT

George Huser

HI5-3601

from **ZENITH**

new
slim
mode



in eyeglass

"Living Sound"
HEARING AIDS*

Zenith CITATION

*You purchase the lenses and frame of your choice from your own Eyeglass Specialist.

Only **\$210.**

FREE DEMONSTRATION!

Weinstock's

169 E. Main, El Cajon, HI2-3441

WATER STORY from page 1
Colorado, and future supplies to the southland.

At the local committee meeting last week E.L. Freeland, manager of the Heights district, and an experienced engineer, sketched the entire picture of Colorado water from its inception, giving campaign members a good idea of just what Alpine is going about to secure this invaluable supply.

The last few issues of the Sun have repeated facts, costs and figures on this proposition, and the legal notice in this issue carries it all, plus polling places, officers and so on.

At presstime Chas. C. Price, head of the Pio board, told the Sun that Flinn Springs area's tax to pick up all back taxes is 51¢, as it went on the tax rolls a year ago. Alpine will pay 71¢, and each year that it delays getting allotment, the tab goes up; therefore now is the time to get in. That is the simple reason why those working for water urge all voters to get to the polls and cast their ballot for this annexation.

Dr. Gertrude T. Ryder
OPTOMETRIST

175 N. MAGNOLIA

El Cajon, California

Phone HI4-9012

GET READY NOW!
FOR THE FALL RAINS!
Let Us Check Your Roofs.

WHY WAIT FOR LEAKS TO MAKE TROUBLE?

KLEIN & KOECHIG
ROOFING CONTRACTORS

SIDING, INSULATION & WATERPROOFING

QUALITY WORKMANSHIP

FREE ESTIMATES

260 Woodman St. San Diego 14 CO4-2502 or 5563

CLASSIFIED

30¢ PER LINE PER TIME. CASH ONLY. COUNT SIX WORDS TO EACH LINE. MAIL TO THE SUN, ALPINE, CALIF. CASH. CHECK, COIN OR STAMPS O.K.

FOR SALE, MISCELLANEOUS

HAND MADE ROPING SADDLE \$115.
CASH...6 MO. OLD PART NUBIAN
DOE GOAT...IRONER. FRIGIDAIRE
MAKE. \$50. HI5-3897.

DRY EUCALYPTUS CORD WOOD DELI-
VERED IN ALPINE. \$30. A CORD.
HI5-2716. (10-7)

MINIATURE UPRIGHT PIANO. PERFECT
CONDITION. INICE FOR SMALL AP T.
OR TRAILER. HI4-5165.

FRIGIDAIRE RESRIGERATOR. GOOD
WORKING CONDITION. \$50. HI5-2394.

MACHINERY FOR SALE

INT. TD-9 WITH HYD. DOZER AND
RIPPER...\$3450.00
A-C HD19 TRACTOR WITH DOZER AND
DD PCU...\$4250.00
WOOLDRIDGE HD PULL RIPPER
...\$750.00
HD19 AND RIPPER...\$5250.00.
CONSTRUCTION MACHINERY CO.
2175 NEWTON SAN DIEGO.
BE9-4143 NITE HO9-8330

HOUSES FOR RENT

2 BR FURNISHED PRACTICALLY NEW
ADULTS. \$75. 2751 HWY 80 EAST.
HI5-3839.

1 & 2 BR. \$45.-\$50. UNFURN.
HOUSES. GUATAY. FIREPLACES &
SHADE TREES. CY6-4603 (9-16)

WANTED TO RENT

WANTED TO RENT. 2 OR 3 BR HOUSE
FURN. NEAREST TO MURPHY'S AUTO-
MOTIVE. JOHNSTOWN. HI4-4367 OR
HI3-3373. STEVE.

SPECIAL NOTICES

RUTH BURDETT, PIANO LESSONS
HI5-2877

LET MAC HAUL YOUR RUBBISH AND
GARBAGE. HI5-2414

ALPINE REFRIGERATION & APPLIANCE
SERVICE, HI4-8861, 381 N.
MOLLISON, EC. (TF)

EASTGATE INSURANCE AGENCY.
6217 UNIVERSITY. JU2-5555.

ALPINE CLEANERS & U-WASH.
2223 HWY 80. CALL HI5-2242 FOR
FREE PICKUP AND DELIVERY. EXPERT
CLEANING, PRESSING AND FINISHED
LAUNDRY SERVICE.

YARD MAINTENANCE - GARDENING
PAINTING. REASONABLE RATES.
CALL HI5-3003. ASK FOR SAM.

MONEY TO LOAN

EL CAJON FINANCE CO.
133 N. ORANGE, EL CAJON. HI2-1651

Self-reliance and self-respect are
about as valuable commodities as we
can carry in our pack through life.

FOR RENT

3 BR House on 10 acres \$100.
2 Bedroom Modern Furnished
& Unfurnished Houses and
Duplexes. Children. Newly
Decorated and Under new
Management. \$63. to \$70.

CARLSTROM COTTAGES

2250 HWY 80 ALPINE HI5-3092-3328

FLORENCE'S MARKET

Owned & Operated by Florence Clarke

Groceries - Meat - Fresh Vegetables - Liquor

2262 Highway 80

Hickory 5-2436

Alpine

Alpine's Fine Weather

FROM OFFICIAL US STATION HERE

HIGH. 105. AVE. HIGH. 98
 LOW. 68. AVE. LOW. 71
 NO RAIN. SEASON .06

ELEVATION 2000 FEET
 WHERE THE SUNSHINE SPENDS THE YEAR

The John Findels, South Grade Road, are parents of a baby boy, born Aug. 31. Little John weighed 7-15 oz. and he has a little sister, Tani, now 5, to welcome him. Findel works at Stellardyne

Phelps to Appeal

Byrl D. Phelps, Alpine propertyowner, convicted of an elections code violation in EC, says he will appeal and Judge Jos. Doerr agreed to postpone execution of a fine pending the appeal in Superior Court. He had been found guilty of distributing pamphlets, a history of the water situation, in Alpine last year.

El Cajon

Travel**Bureau**

GREYHOUND BUS AGENCY

Scheduled Airline Tickets

To All Points

W. DUNCAN, Agent

423 E. Main, El Cajon, HI4-7978

Water Wells PUMPS

SALES SERVICE

Water Wells Drilled

STOCKTON PUMP & MACHINE

311 N. 2nd, El Cajon, HI4-2672

FINAL CLOSE-OUT!**ALL 1960 CHEVROLET CARS and TRUCKS**

Low, low, low prices!
 High trade allowances!
 All must be sold!

\$ 1963

Priced From

DELIVERED IN EL CAJON

TERMS! TERMS!! TERMS!!!

SAVE STILL MORE ON A BIG SELECTION OF
 DEMONSTRATORS CARS AND TRUCKS

850 El Cajon Blvd.

Open Evenings - Closed Sundays
 (Because it is Sunday)

